

Portable, Ultralight, Affordable

The convenient partner to scan, copy and Email with the push of a button to make all your projects a success!



- Brightness and contrast controls to customize color output for specific applications
- Hi-speed USB 2.0 interface (USB 1.1 compatible)
- Includes TWAIN Driver
- Scan & send images to pre-defined destination with a single press

Speed, simplicity and advanced imaging for workgroup applications

The Avison AVA5 is the ideal passport scanner for scanning images from passport and driver license. The unique structure, easy-to-use interface and compact package is best suited for scanning passport & driver's likeness, providing the user with an image of the document.

With AVA5 you can also scan bank checks, ID cards and photos.

The optical resolution can achieve up to 1200 dpi. Typical scanning time for documents is 6.4 seconds.

What we have bundled

The Avison AVA5 scanner comes with TWAIN driver and is also bundled with full version of exclusive Avison Button Manager and ScanSoft PaperPort.

Avison's Button Manager Lite 3

Completes your scan in a single step

Avison's state-of-the-art software application, the Button Manager, enables you to complete complex scanning task in just a single step. When the button is pressed, the scanner automatically scan your documents and convert them to BMP, JPEG, GIF, or TIFF file formats and then send the file to a designated folder, or other destination applications such as e-mail, printer, or your favorable software application. The original step-by-step procedure is replaced with only a single touch of the button.

Fit for both first-time and experienced users alike

For first-time users, Avison's Button Manager provides a true ease-of-use with the 3 pre-configured file formats and destinations for the two buttons on the scanner. For advanced users, Avison's Button Manager makes full customization possible. For example, you can change scan settings, file formats, or even add new destination software application to fit your own scanning needs.

Avision AVA5 Flatbed Scanner

Using the Button Manager Lite

By simply pressing the button on the scanner, the scanned document will be sent to your designated destination application. Yet, before you scan, it is recommended to check the button configurations first to ensure a proper file format and a destination application.

Checking the Button Configuration before Scanning

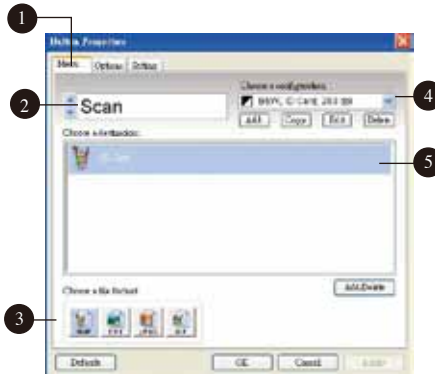
1. After the Button Manager and the scanner driver have been successfully installed on your computer, the Button Panel will be displayed in the Windows System. Tray at the bottom right corner of your computer screen.



The Button Panel

2. The Button Panel shows the predefined scanning buttons. Right-click the button

(function) you wish to check, the Button Properties window appears.



- 1 Click to select options or setting.
- 2 The button name.
- 3 The file format of the scanned image.
- 4 The scan settings for the selected button.
- 5 The destination application. (This is the application that opens after you have finished scanning.)

The default setting is indicated in highlighted color. If you wish to change the setting, use this window to reset the setting for the file

format, destination application, or other scan settings.

3. Click the OK button to leave the window.

The Default Button Settings

The scanner is shipped with preconfigured button settings for your basic scanning tasks such as scan-to-folder, scan-to-email, and scan-to-printer. The following table shows these factory default settings. You can change

Button name	Destination	Default Scan Settings
E-mail	Microsoft Outlook Express	Color @100dpi, A4, BMP
Scan	Microsoft Paint	Grayscale @200dpi, A4, JPEG
Copy	Printer	B&W @300dpi, A4

Press the Button to Start Scanning

1. Press the button you wish to digitize your document.
2. Within seconds, the scanned image is captured and the destination application is opened in your computer screen.

Avision AVA5 Product Specifications

Throughput Speed: (at 200 dpi, A5 size)	6.4 sec.
Scanning Mode:	Flatbed
Scanning Technology:	CIS
Color Depth	48 bits (input) 24 bits (output)
Recommended Daily Volume:	Up to 1,000 pages per day
Optical Resolution:	1200 dpi
Light Source:	LED
Output Resolutions:	75, 100, 150, 200, 300, 400, and 600 dpi
Maximum Document Size:	148 mm x 210 mm (5.8 in x 8.2 in)
Paper Thickness and Weight:	16 - 28 lb. paper
Connectivity:	USB 2.0 (cable included)
Interface Support:	TWAIN
File Compression:	TIFF G4, JPEG
File Format Outputs:	Multi-page TIFF and JPEG, GIF, BMP.
Warranty:	One-year
Electrical Requirements:	Input: 100-240 VAC, 50/60 Hz Output: 24V, 1.25A
Power Consumption:	<9 W
Dimensions:	275 x 270 x 38 mm 2.17 x 9.9 x 6.3 in.
Weight:	1.1Kg (2.4lbs)

Minimum System Requirements

- Pentium 4 or higher
- Windows®98SE/Me/XP/2000/Vista
- 128MB RAM (256MB RAM for Windows XP)
- CD-ROM drive
- USB port

Contents

- AVA5 scanner
- Power Supply
- USB 2.0 Cable
- CD-ROM includes:
 - Scanner Driver (TWAIN Driver)
 - Avision Button Manager
 - ScanSoft PaperPort

